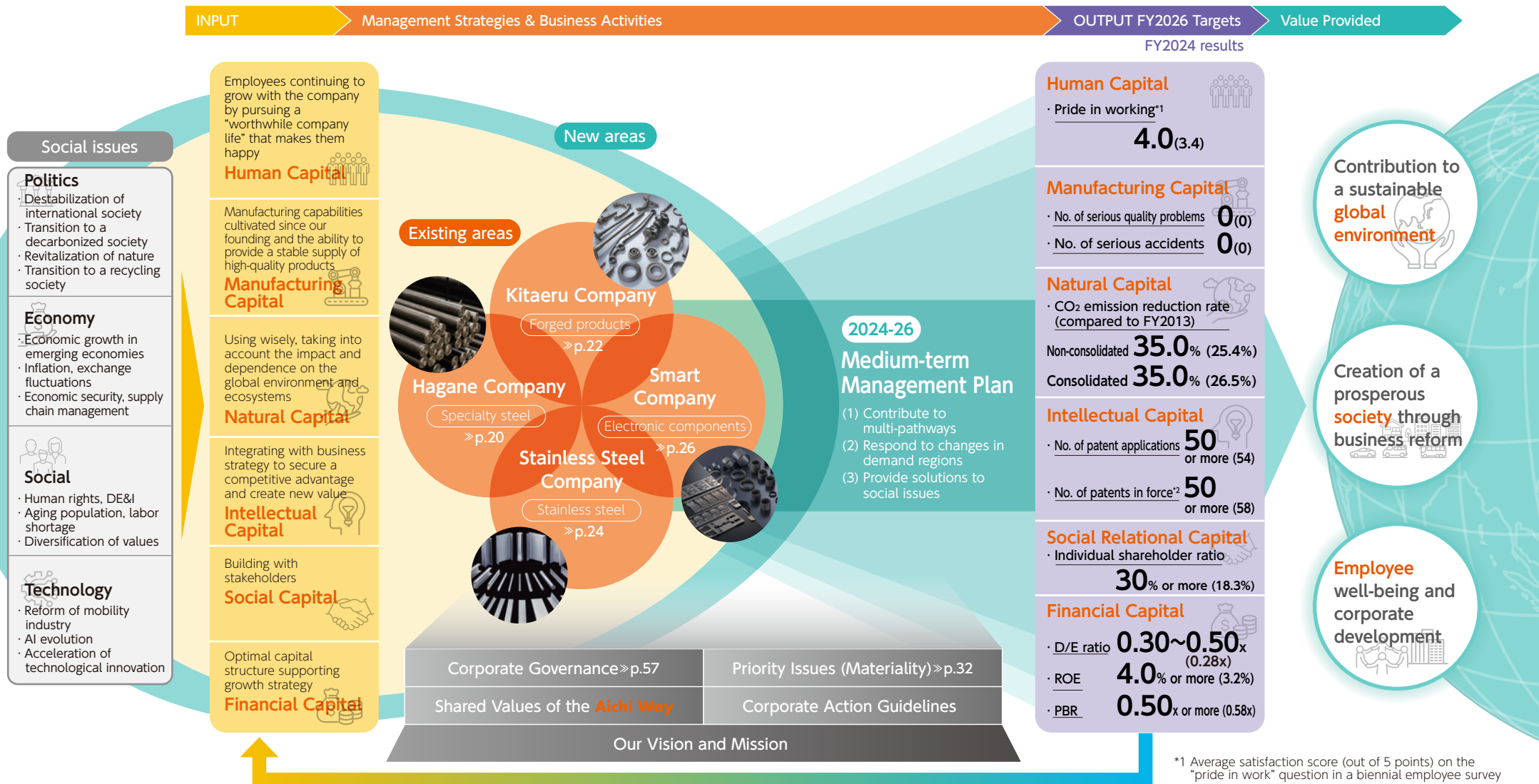


Value Creation Process

The Aichi Steel Group pioneers new areas of business as a materials manufacturer, starting from social issues and leveraging the capital (strengths) we have developed since our founding, based on Our Vision. Through our business activities, we aim to make a sustainable social contribution and increase our corporate value by providing three values centered on “global environment,” “society,” and “employees.”



*1 Average satisfaction score (out of 5 points) on the “pride in work” question in a biennial employee survey

*2 No. of patents held for which sales were recorded in that FY